

free
play™



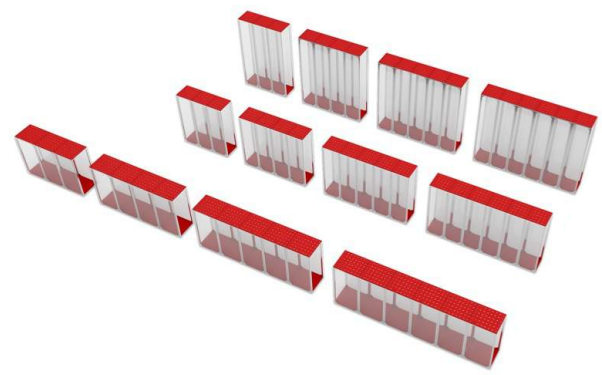
2021 Product Catalog
www.freeplayplaygrounds.com



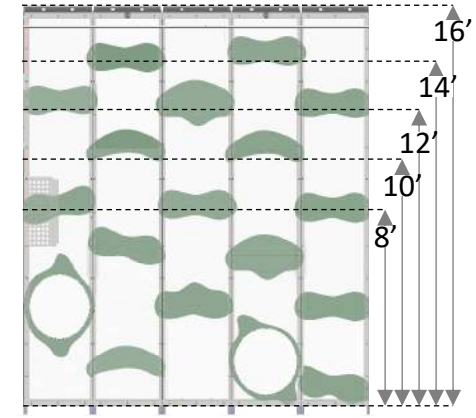
INNOVATIVE DESIGN



PROMOTES FREE PLAY



Design your configuration

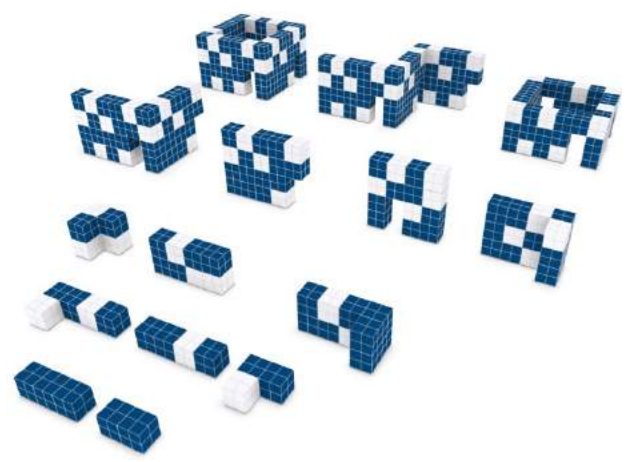


Select height



Add a slide

MODULAR & CUSTOMIZABLE



Connect to other components

and much more...

table of contents



1 . A N T F A R M S



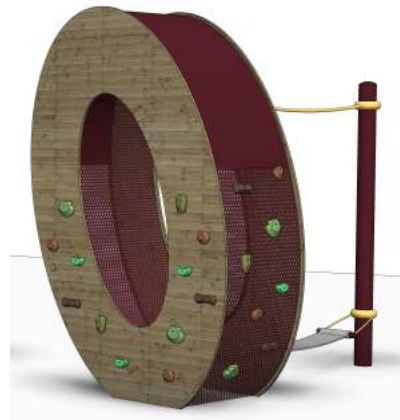
2 . M A Z E S



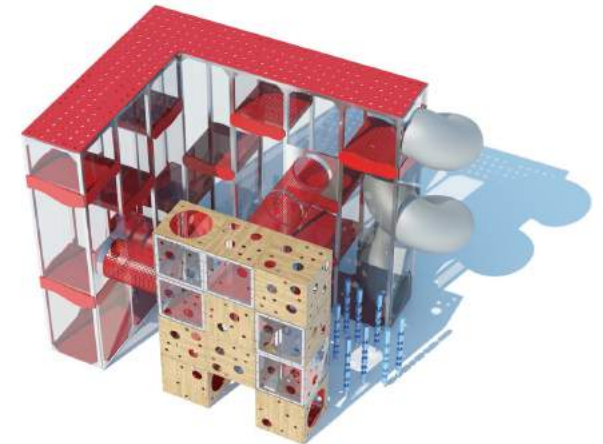
3 . C O R N F I E L D S



4 . W I L L O W S



5 . N E W A R R I V A L S



6 . S A M P L E L A Y O U T S

1. Ant Farm™

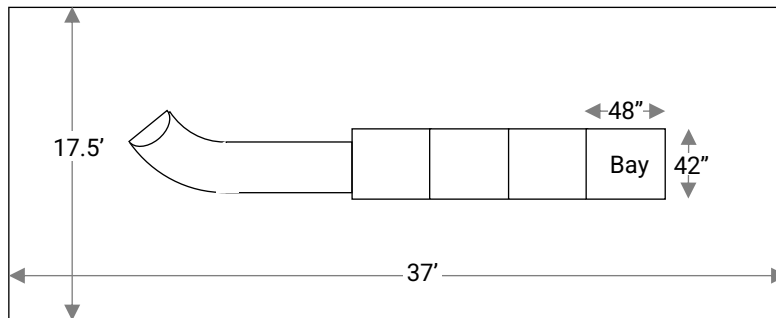


The Ant Farm™ is a stunning, clear structure supporting organic-shaped platforms and climbing tubes that appear to float in space. Kid can climb up the sheer walls, into the suspended tubes and through the invisible structure. Add a spiral or straight slide. Climbable and contained versions available



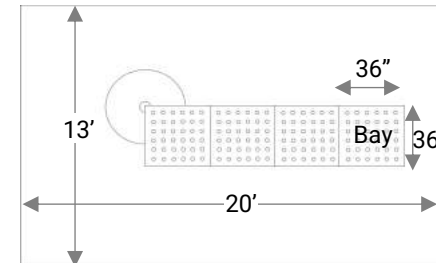
AVAILABLE AS “CLIMBING STRUCTURE” AND “CONTAINED PLAY”

Climbable on outside of unit



- Height of unit is 8'
- Dimension of bays = 48" x 42"
- Utilizes larger safety zone
- Crawl tubes and platforms attach to PC walls
- Delivered largely assembled
- Climb on the outside of the unit
- Meets ASTM F1487 requirements

Climbing only on inside or limited area on outside



- Multiple heights available (8', 10', 12', 14', 16')
- Dimension of bays = 36" x 36"
- Utilizes smaller safety zone
- Crawl tubes and platforms attach to frame
- Unit can be broken down to fit through doors
- Climbing restricted to inside of unit
- Hybrid option enables climbing on outside to a limited height
- Meets ASTM F1918 requirements (ASTM 1487 for hybrid)



MORE CLIMBABLE ANT FARMS



MORE
“CONTAINED PLAY”
&
“HYBRID”
ANT FARMS



2. Maze™

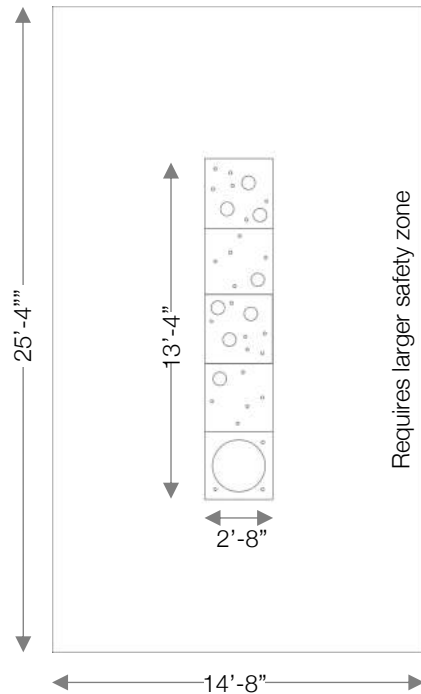


Part labyrinth. Part playhouse. Part Climbing wall. The Maze™ combines polyethylene and polycarbonate cubes with round openings to form an artful structure that invites endless exploration. Climbable and contained versions available



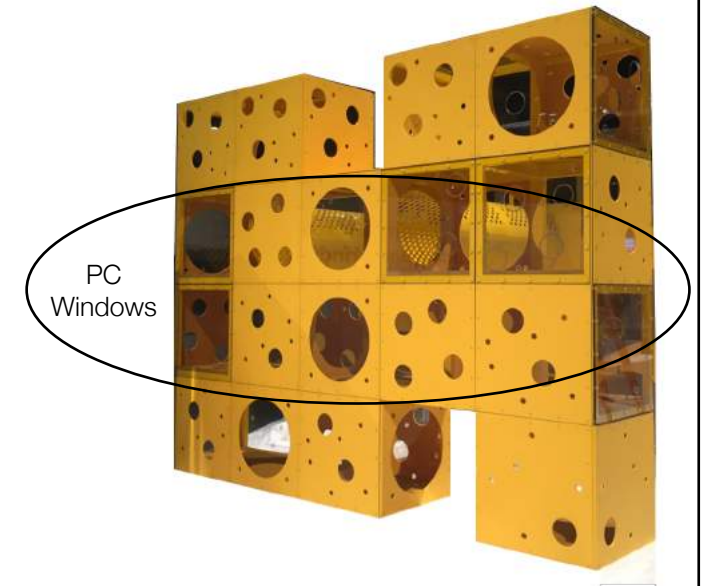
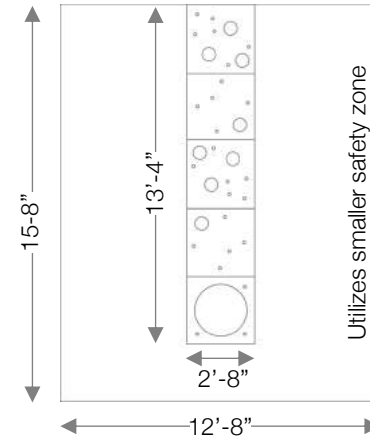
AVAILABLE AS "CLIMBING STRUCTURE" AND "CONTAINED PLAY"

Climbable on outside of unit



- Requires larger safety zone
- Climb on the outside and top of the unit
- Holes in unit are open
- Open top platform with railing
- Meets ASTM F1487 requirements

Climbing only on inside or limited area on outside



- Utilizes smaller safety zone
- Must be 3 or more cubes high
- Round openings for 2nd and 3rd rows have polycarbonate windows
- Restricts climbing on outside and top of unit
- Meets ASTM F1918 and F1487 requirements



MORE MAZE CONFIGURATIONS



3. Cornfield™



Swaying Cornstalks - Illuminated

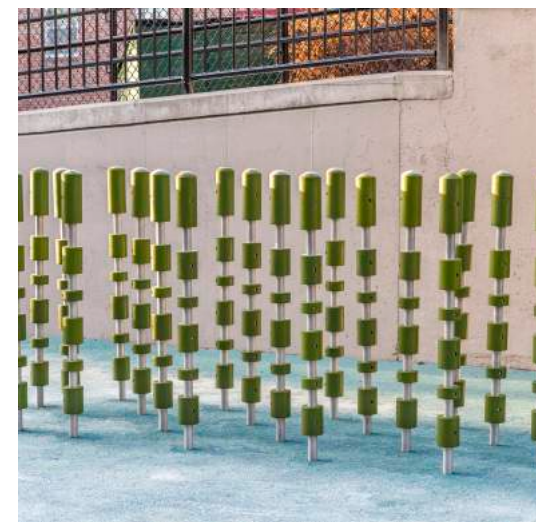
The Cornfield™ is comprised of a field of vertical stalks that gently respond to contact. They can be illuminated, creating impact and drama. Stationary versions are also available where children can climb from one stalk to another



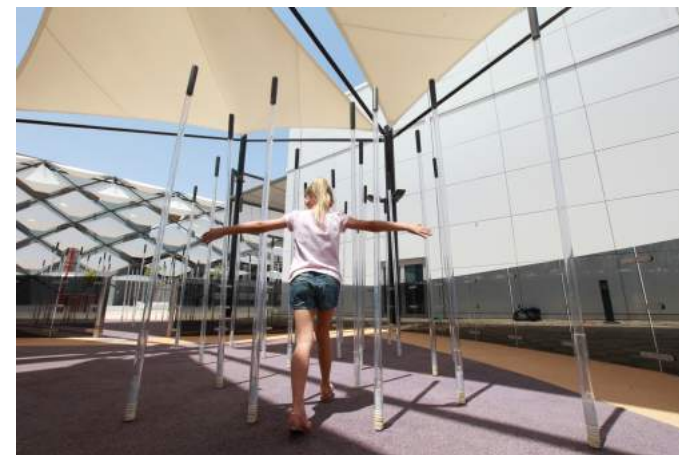
Swaying Cornstalks – Non-Illuminated



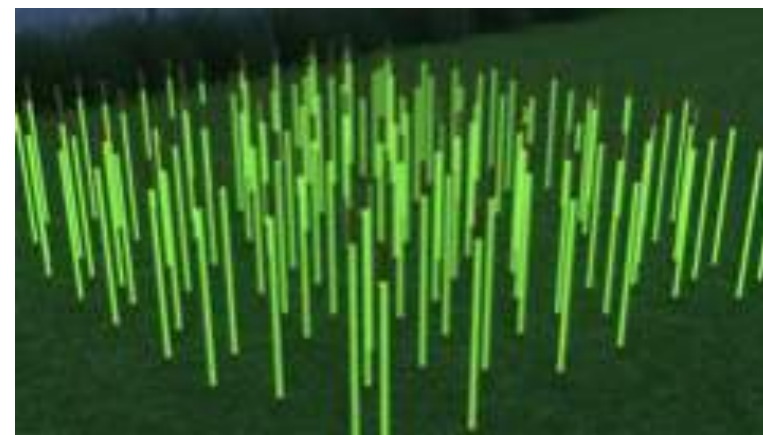
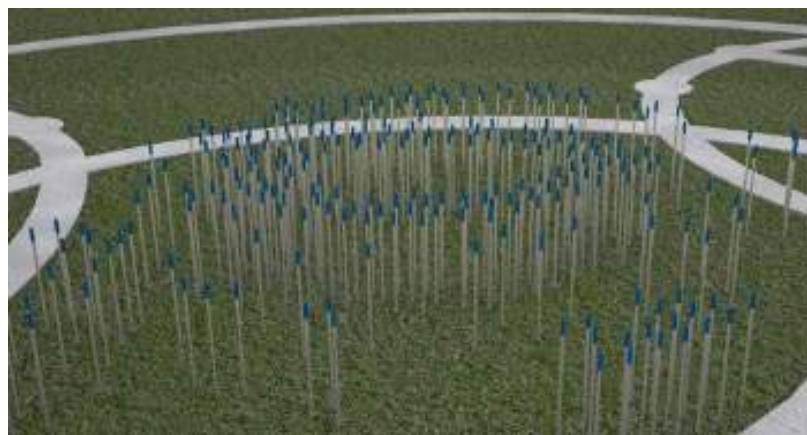
Climbable Cattails
Fixed (10', 11' and 12' stalks)



Climbable Cornstalks
Fixed (4'-2" stalks)

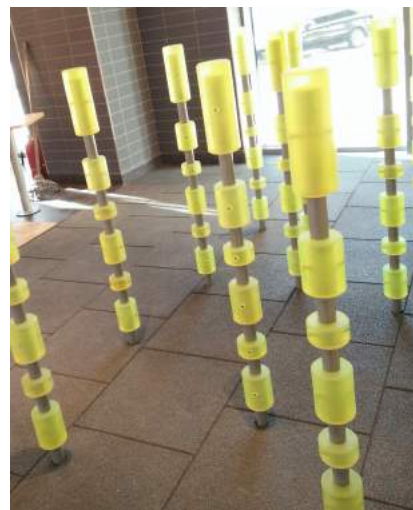


MORE SWAYING CORNFIELDS

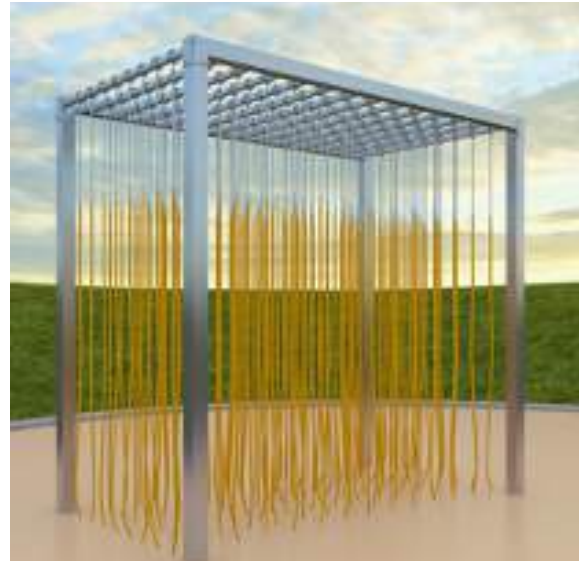




MORE CLIMBABLE CORNFIELDS



4. Weeping Willow™



The Weeping Willow™ is a steel structure from which hangs a dense canopy of ropes. Children can climb up, swing or move through and explore. Ropes can be tethered to ground for ASTM compliance. A version with chimes in place of ropes is available – which creates a beautiful musical experience





MORE WEEPING WILLOWS



5. NEW ARRIVALS

LOGO CLIMBERS

All new Logo Climbers™. Children and adults alike will be captivated by the towering, sculptural and interactive letters – making the perfect “Instagram moment.” Kids can climb up the sheer walls or just hang out with friends. Various play structures can be added.



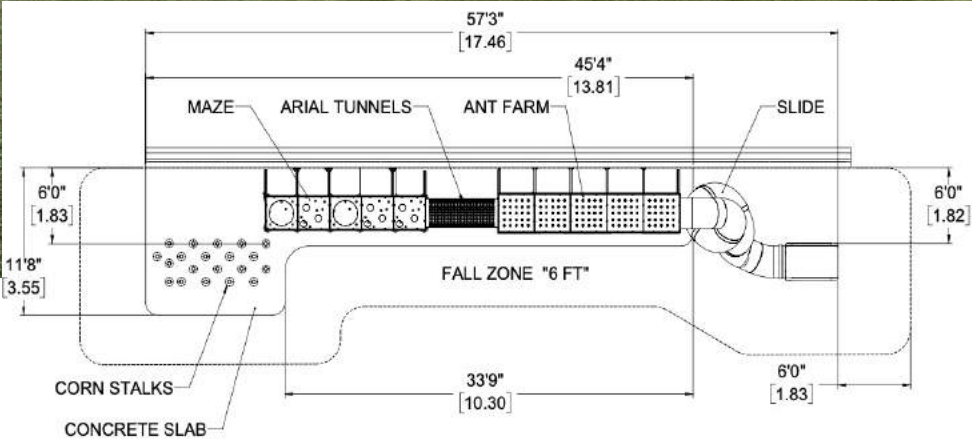
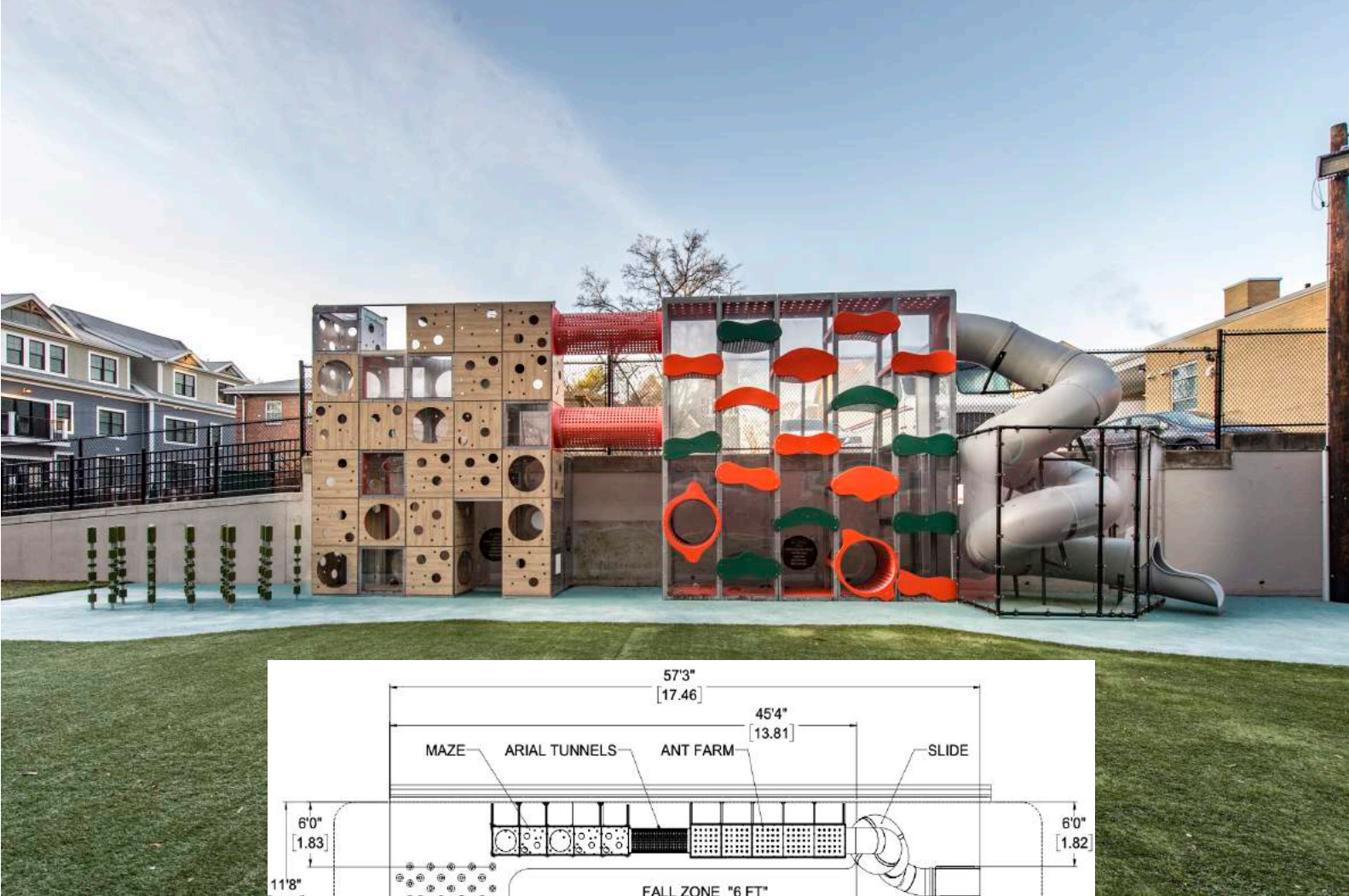
5. NEW ARRIVALS

BENCH SEATING

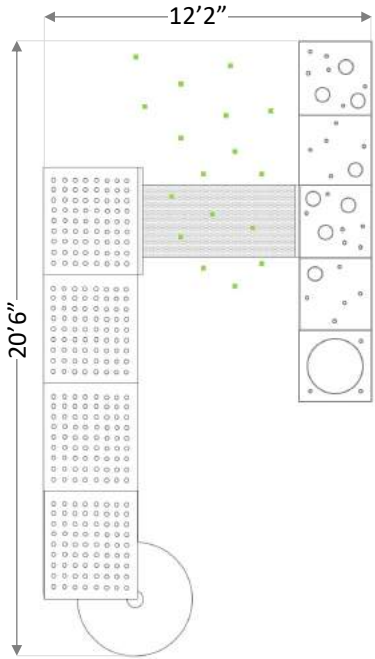
FreePlay now offers bench seating that perfectly integrates with the playground equipment to create a beautiful and fully immersive environment



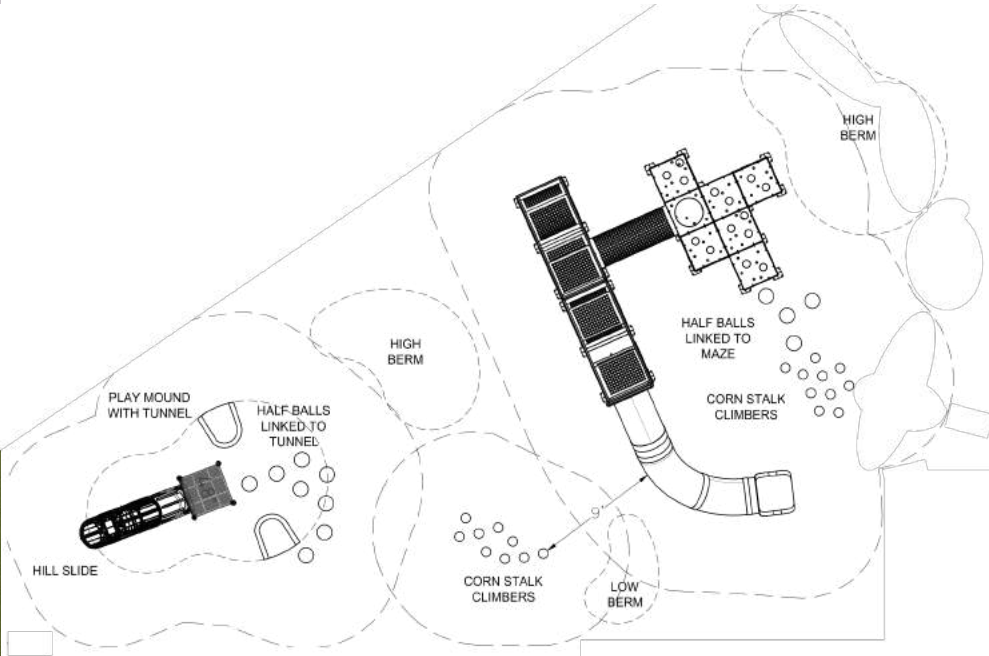
SAMPLE LAYOUT 1



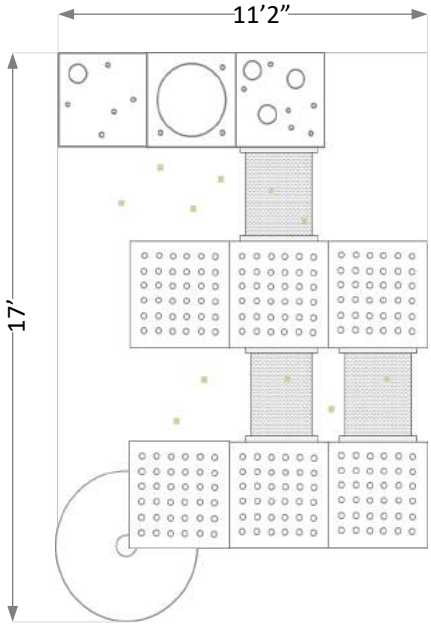
SAMPLE LAYOUT 2



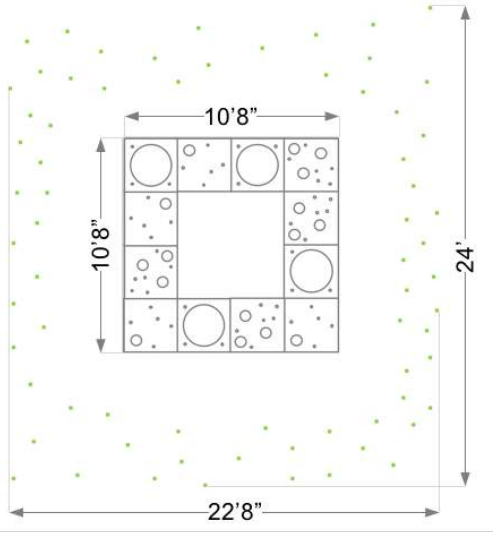
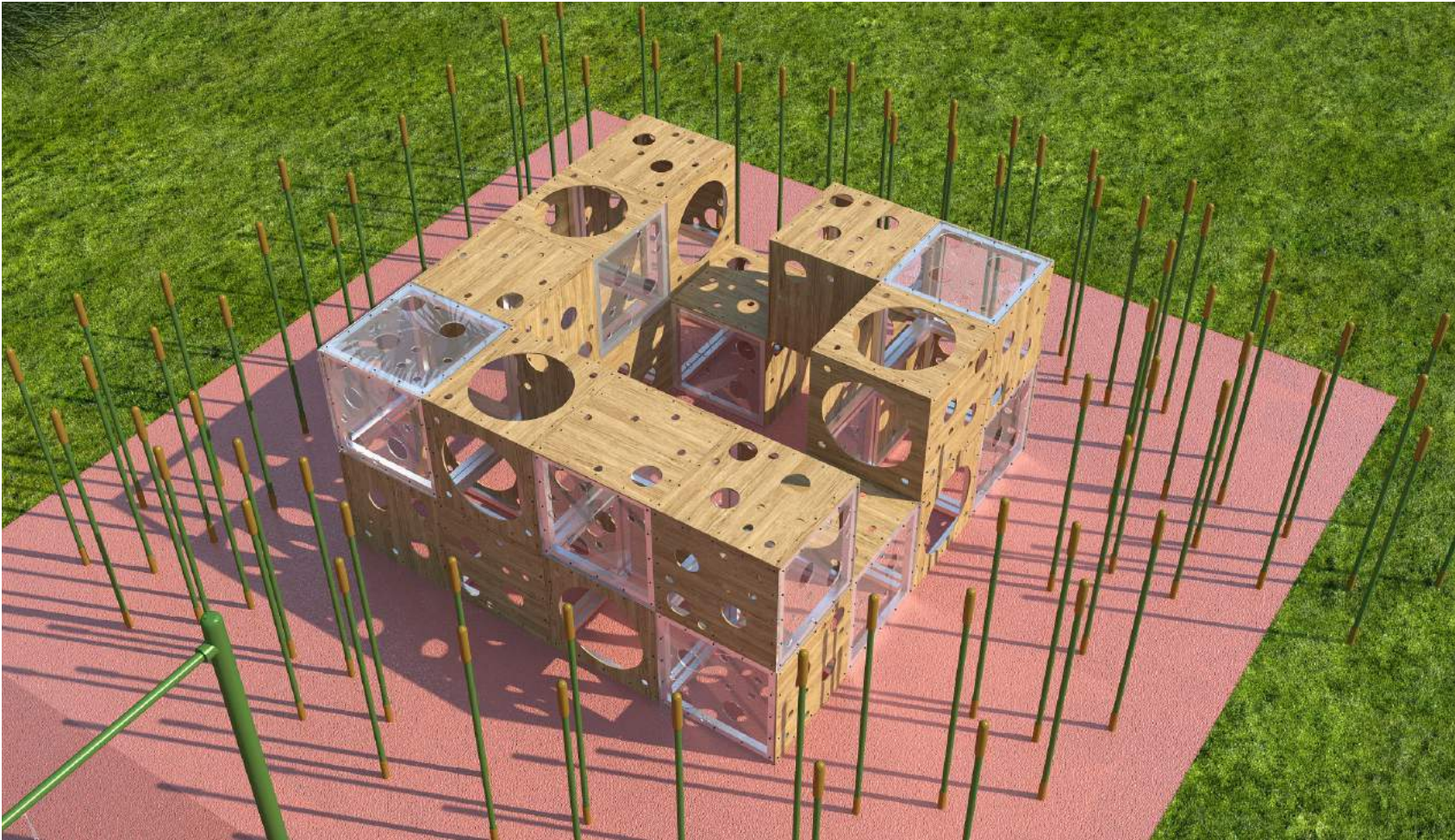
SAMPLE LAYOUT 3



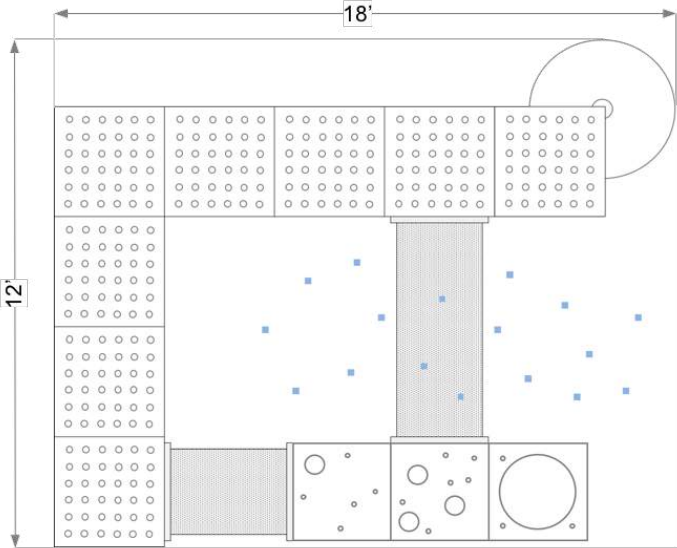
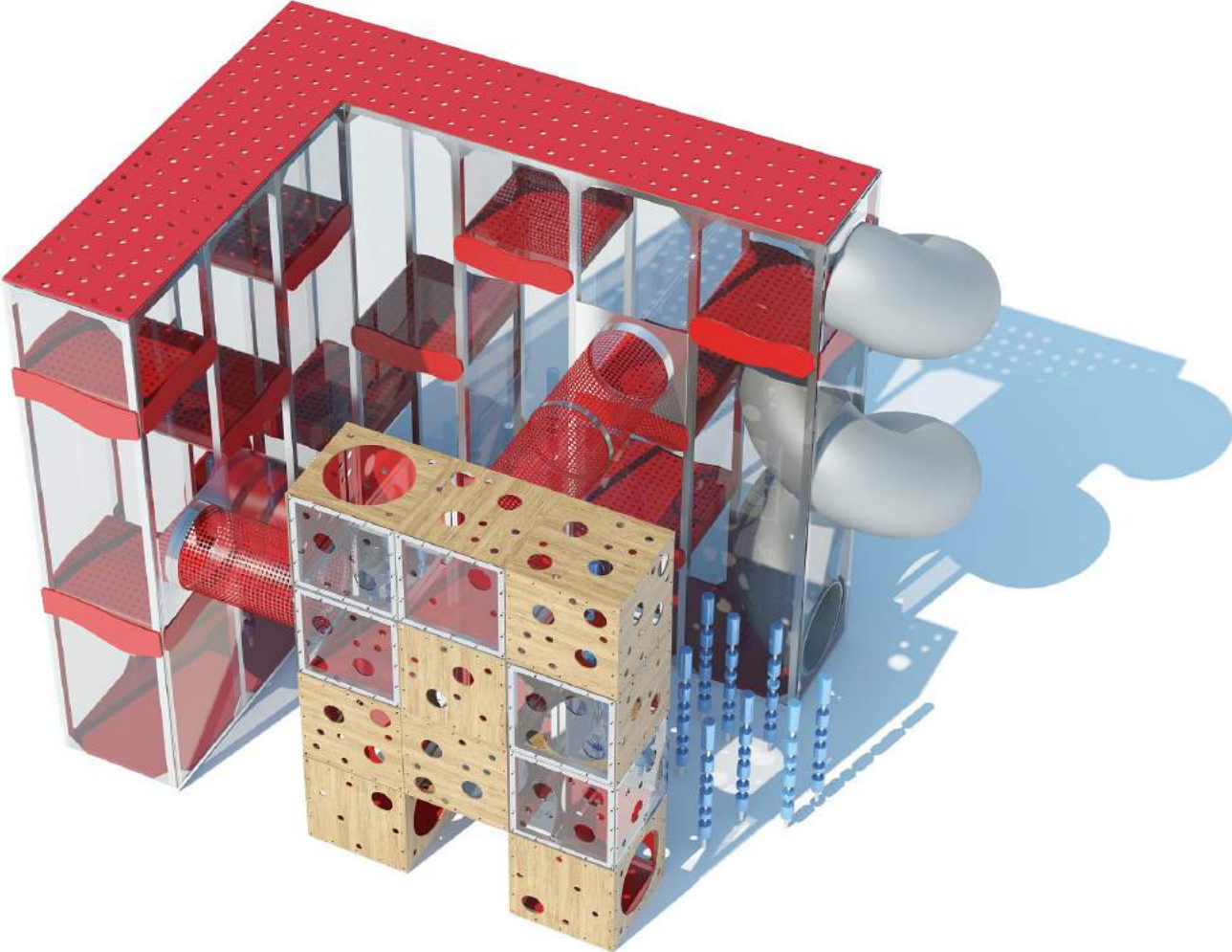
SAMPLE LAYOUT 4



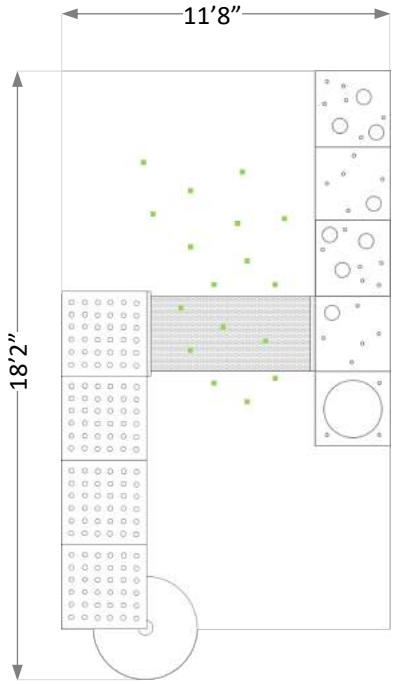
SAMPLE LAYOUT 5



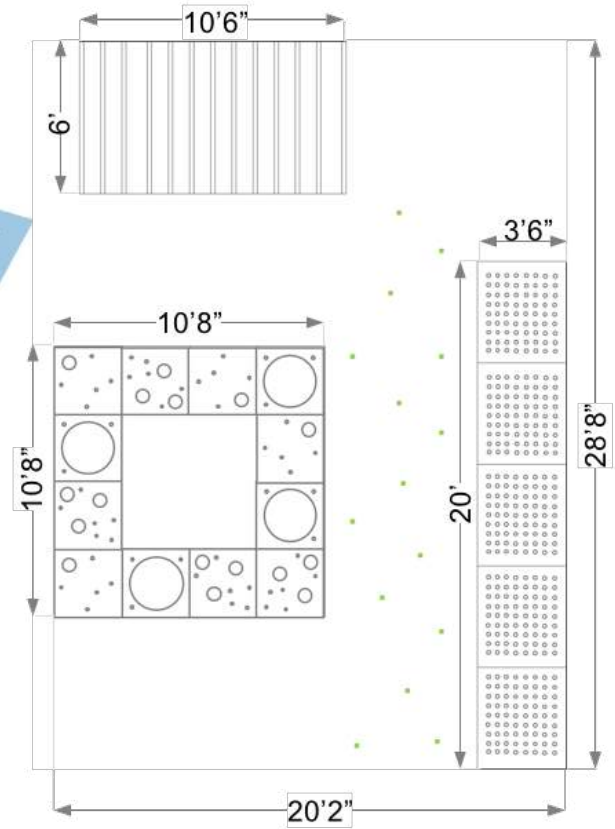
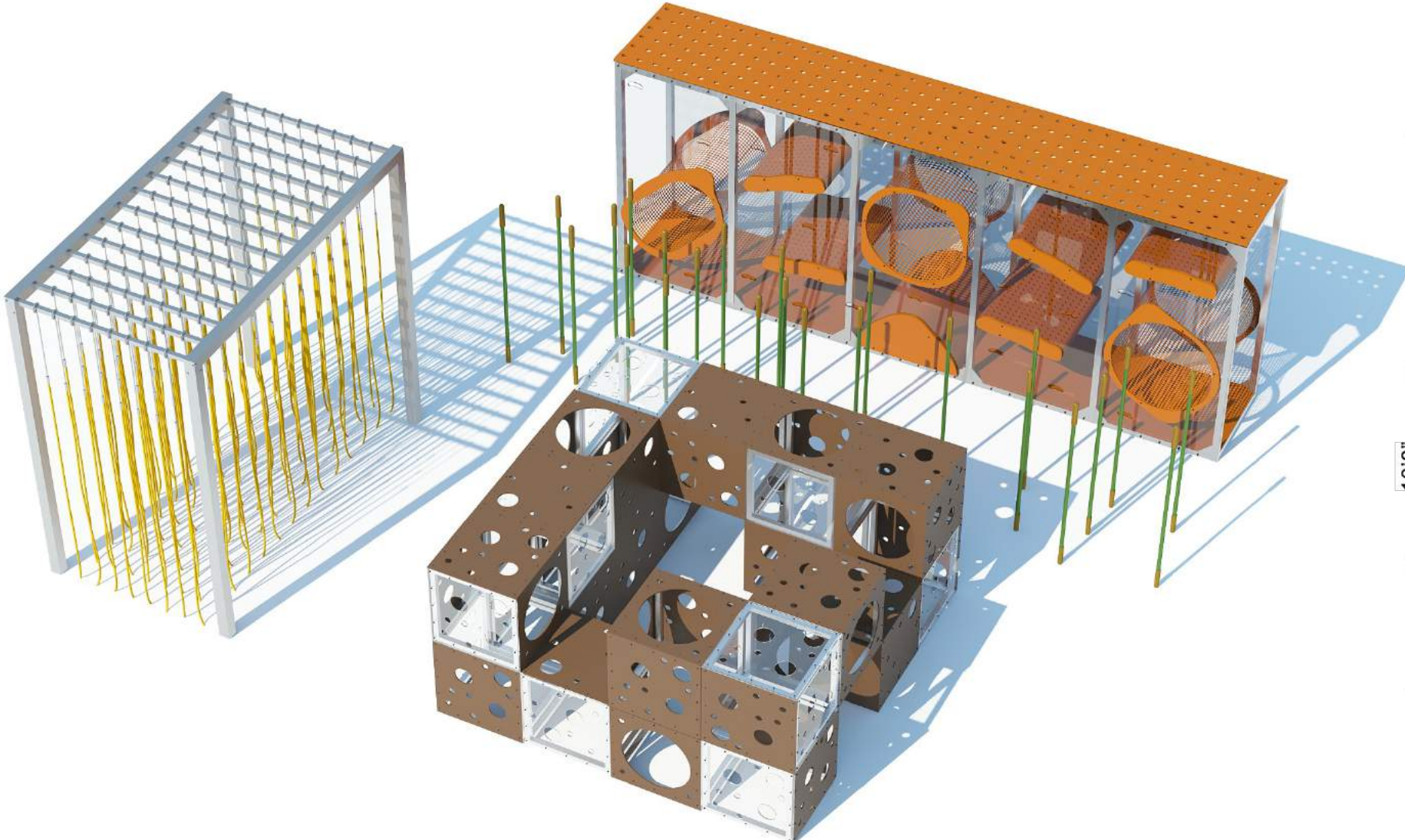
SAMPLE LAYOUT 6



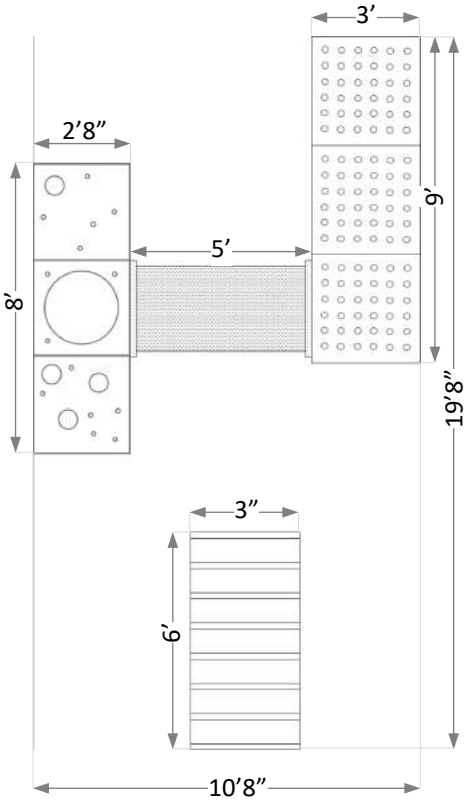
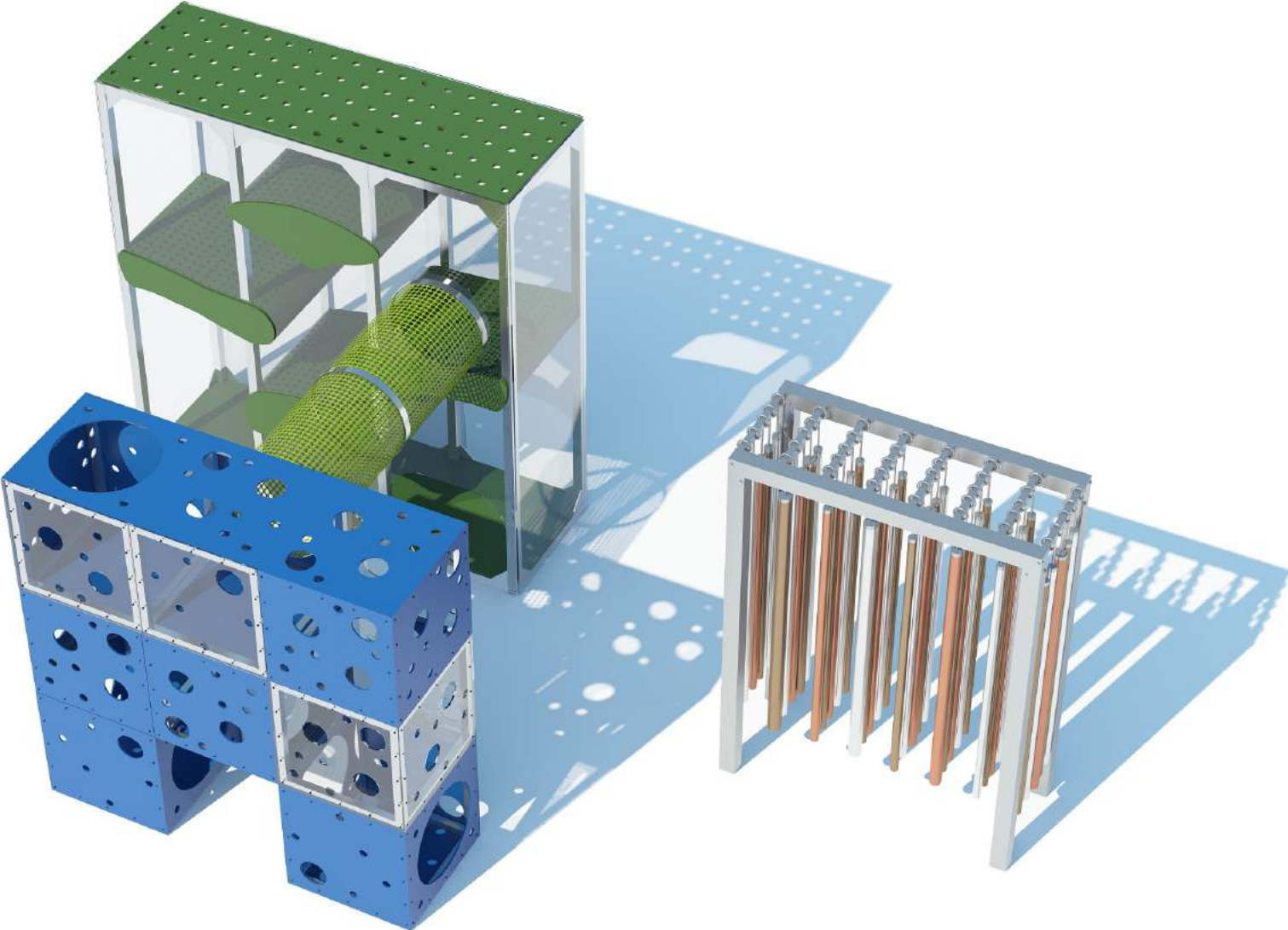
SAMPLE LAYOUT 7



SAMPLE LAYOUT 8



SAMPLE LAYOUT 9



free
play™

MORE THAN A PRODUCT, A MISSION

Contact:

+1 973 727 5956

dan@freeplay.us.com

<http://freeplayplaygrounds.com>